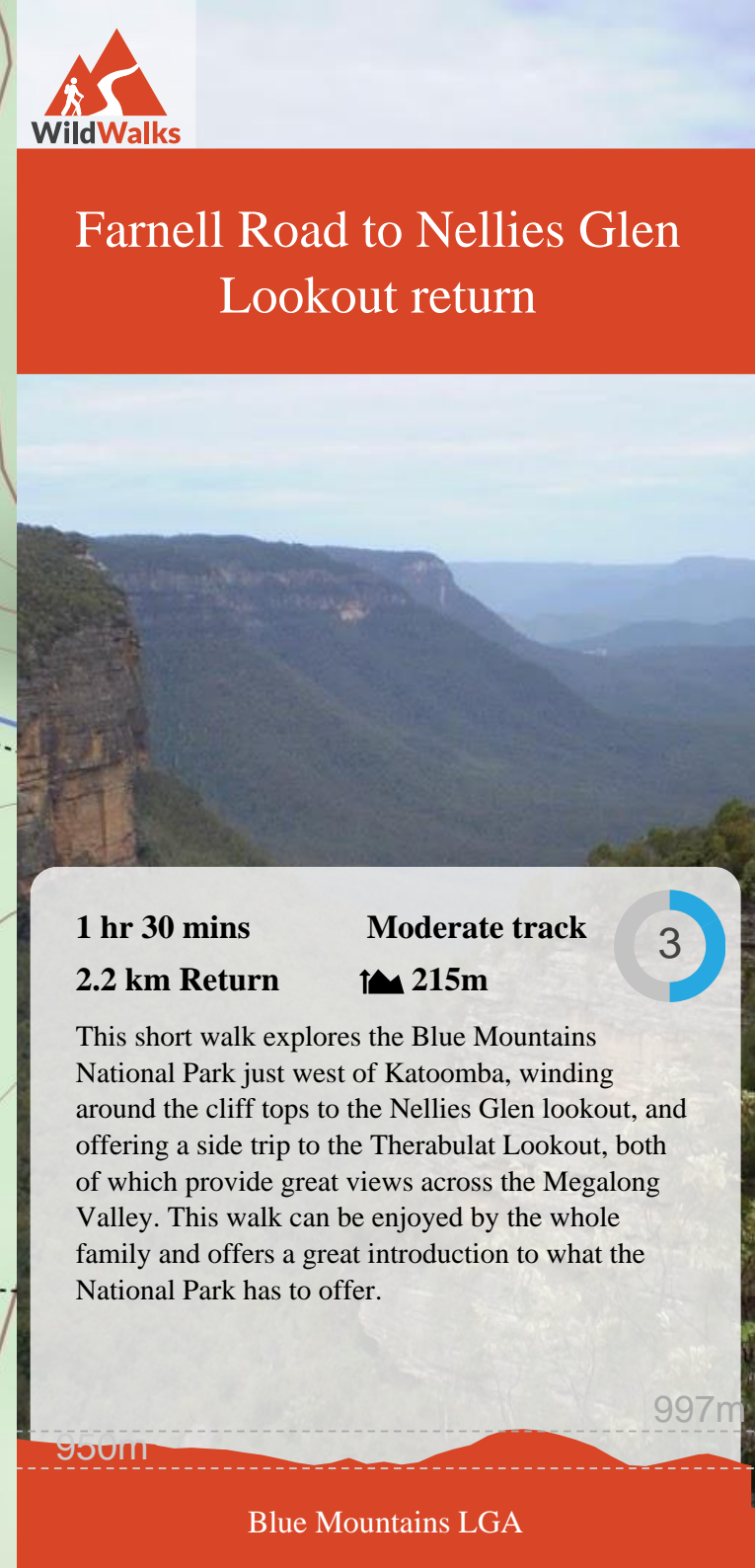
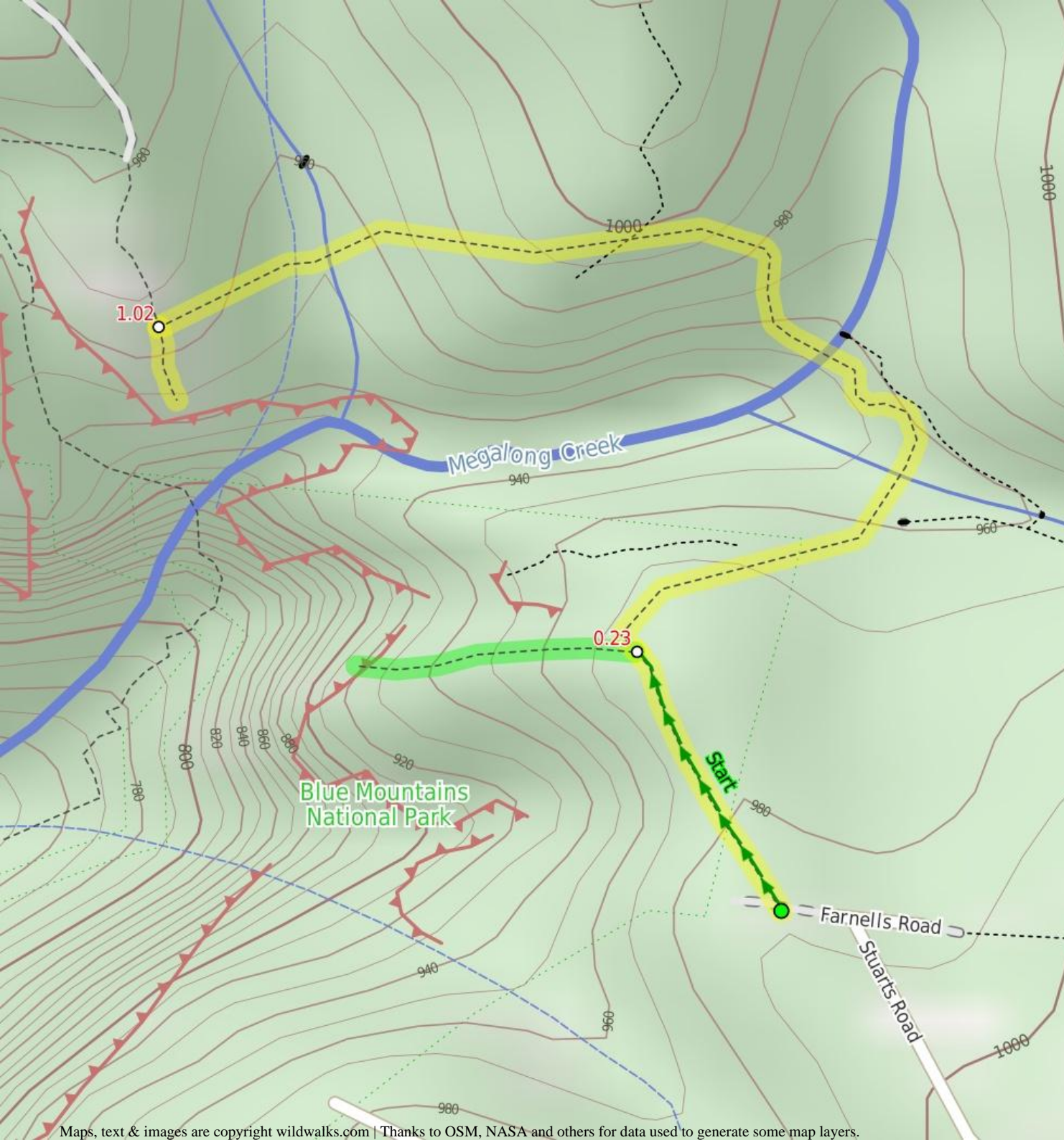


Farnell Road to Nellies Glen Lookout return



1 hr 30 mins

Moderate track

3

2.2 km Return

↑ 215m

This short walk explores the Blue Mountains National Park just west of Katoomba, winding around the cliff tops to the Nellies Glen lookout, and offering a side trip to the Therabulat Lookout, both of which provide great views across the Megalong Valley. This walk can be enjoyed by the whole family and offers a great introduction to what the National Park has to offer.

Are you ready to have fun?

Please ensure you and your group are well prepared and equipped for all possible hazards and delays. Check park closures, weather information and Fire Danger Rating before setting out. Optional side trips and alternate routes noted are not included in this walks overall grade, length or time estimate. Please allow extra time for resting and exploring areas of interest. The authors, staff and owners of wildwalks take care in preparing this information but will not accept responsibility for any inconvenience, loss or injury you may experience. Please take care, have fun - Happy Walking.

Getting there You can get to Int of Farnells Rd and Cliff Track (gps: -33.7138, 150.2925) by car or bus. Car: There is free parking available. This is a return, so you will finish back at the start.

Find up to date and more information including; travel directions, weather, park closures and walker feedback at <http://wild.tl/frtnglr>

0 | Int of Farnells Rd and Cliff Track

(230 m 5 mins) From the intersection of Farnells Rd and the bush track marked by the signpost saying 'Cliff Track' (approximately 30m west of the end of Stuarts Rd), this walk heads north down the bush track until coming to an intersection with another bush track. This corner is marked by a large cairn and an orange banner wrapped around the tree on the corner.

0.23 | Optional sidetrip to Therabulat Lookout

(140 m 5 mins) Veer left: From the intersection, this walk heads west along the bush track until coming to a lookout over the valley, which has great views to the south and south-west. Railings have been installed at this lookout. At the end of this side trip, retrace your steps back to the main walk then Turn sharp left.

0.23 | Intersection of Cliff Track and Therabulat Lookout

(790 m 25 mins) Continue straight: From the intersection, this walk heads south-east along the flat bush track. As the walk turns to the west and crosses a small creek using a bridge, the track begins to climb steadily around the side of the hill. This continues until reaching an intersection with a wide track, marked by a signpost saying 'Bonnie Doon Fauna Study Being Conducted at this Site'.

1.02 | Int of 6 Foot Track and Norths Lookout Trail

(60 m 2 mins) Turn left: From the intersection, this walk follows the track downhill towards the open views. After about 50m the track comes to the fenced and signposted 'Norths Lookout' with great views over Nellie's Glen and into the valley.

